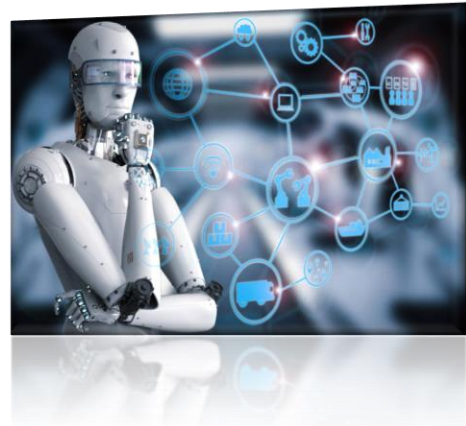


MSc Research Scholarship

Background

CIT INFINITE is an Industrial Internet Consortium (IIC) approved Industrial Internet of Things testbed that encompasses all the significant technologies, domains and platforms for Industrial IoT environments across cloud, security, mobile, networks, sensors and analytics. It is a partnership with Dell EMC's Ireland Centre of Excellence, in Cork. We are currently offering an MSc research scholarship to study the use of machine learning in a variety of applications. The successful candidate will be assigned an academic supervisor, as well as a technical mentor from Dell EMC. The MSc research will take place at Dell EMC's facility and academic support will be provided by CIT (www.cit.ie), which has many top-class facilities including its award-winning Library & IT Building and its world class laboratories. CIT presently has four separate campuses. The main campus is located in Bishopstown, Cork, Ireland and covers an area of approximately 80 acres.



The research project will focus on data mining and/or artificial intelligence approaches that can improve areas such as operations, performance and security. Details of the project are available on request.

Skills Required

The candidate should have the following background:

- At minimum a 2H1 grade in a primary degree in Computer Science or Information Systems or Maths/Financial Maths or Stats or similar.
- An understanding of artificial intelligence algorithms (supervised and unsupervised machine learning, anomaly detection, pattern recognition, and similar), including how the algorithms work and the types of problems to which they can be applied.
- Competent in statistical analysis, including confidence intervals for estimation problems, etc.
- A solid knowledge of programming languages.

Application Procedure

Interested candidates send a recent C.V. to paul.walsh@cit.ie with subject heading 'MSc Postgraduate Scholarship Application':

Scholarship Information

The scholarship will have a value of up to €20,000 over 24 months, to include fees, travel/equipment expenses and a monthly stipend. Milestones will be agreed between the researcher and their supervisors at the beginning of the program and continuation of payment throughout the placement period will be subject to these milestones being achieved.

For further information contact paul.walsh@cit.ie with subject heading 'MSc Postgraduate Scholarship'.